

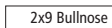
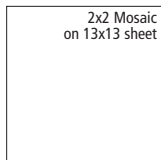
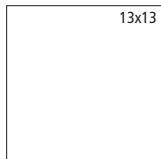


Fontino

Ceramic / Porcelain



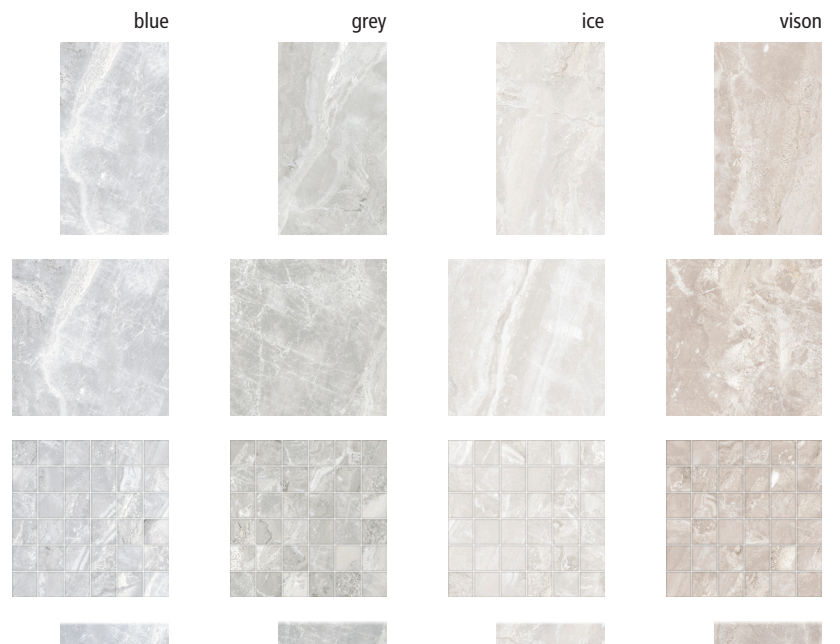
AVAILABLE SIZES



DESCRIPTION



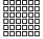
Fontino is a Spanish porcelain tile series with an elegant, marbled screen. A 13"x13" porcelain floor tile is accented by a 9"x16" glossy ceramic wall tile along with a 2"x2" porcelain mosaic. Soft muted tones with low shade-variation create on-trend color options in Ice (white), Blue, Grey or Vison (beige).

COLORS




TECHNICAL INFORMATION

TILE SIZES

Nominal	Shape	Material	Thickness
9 x 16 Glossy Wall		Ceramic	9.3 mm
13 x 13		Porcelain	9.0 mm
2 x 2 Mosaic		Porcelain	9.0 mm

COORDINATING TRIM

Nominal	Shape	Material	Thickness
2 x 9 Glossy Bullnose		Ceramic	9.3 mm

PERFORMANCE DATA

CHARACTERISTIC	NORMS	FLOOR TILE ONLY
Water Absorption	ISO 10545-3	≤ 0.5%
PEI Abrasion Resistance (Glazed)	ISO 10545-7	4
Breaking Strength	ISO 10545-4	≥ 35 N/mm ²
Dynamic Coefficient of Friction Wet	AcuTest	0.36
Frost Resistance	ISO 10545-12	Frost Proof
Dimensions Range	10545-2	Conforms
Resistance to Stains	ISO 10545-14	Class 3

SHADE VARIATION



V3 - MODERATE VARIATION

While the colors present on a single piece of tile will be indicative of the colors to be expected on the other tiles, the amount of colors on each piece may vary significantly. For example "that little bit of color" on one piece of tile may be the primary color on the next piece.

WEAR CODE

13x13 / 2x2 Mosaic: 4 - Rated for all residential and light commercial applications.

9x16 Glossy Wall / 2x9 Glossy Bullnose: 1 - Rated for wall applications only.

APPLICATIONS

	RESIDENTIAL	LIGHT COMMERCIAL	COMMERCIAL
FLOORS	✘		
WALLS / BACKSPLASH	✘	✘	✘
POOL DECKING			
EXTERNAL USE - FROST PROOF			

✘ - Has been approved for this application.

* - Information is available upon request.

NOTES

Always inspect materials prior to installation.

Grout Joint Recommendation: 3/16"

Always mix 2-3 cartons at a time while installing to insure the best blend.

All product images are representative only. Variation in color and shading is to be expected. Final selection should be made from actual tile samples.